



WHITE HAME

SEVENOAKS, KENT





This family-run and renowned, bespoke home building company in Sevenoaks has many years of experience in the field of construction, providing a quality product and customer service that is second to none.

We treat every home we build as if we were creating a property for our own family, ensuring that quality is paramount. As such, we source only the best materials for our homes. Very often these are acquired from local suppliers, firstly to support other local businesses, but also so we can check the quality of materials first-hand.

Such meticulous attention to detail in the design assures a home that is very special and to a prestigious standard of build, creating a property in which purchasers aspire to live.

We also pride ourselves on excellence in our customer service to ensure that they are fully satisfied, offering support to buyers before, during and after the purchase and construction process.



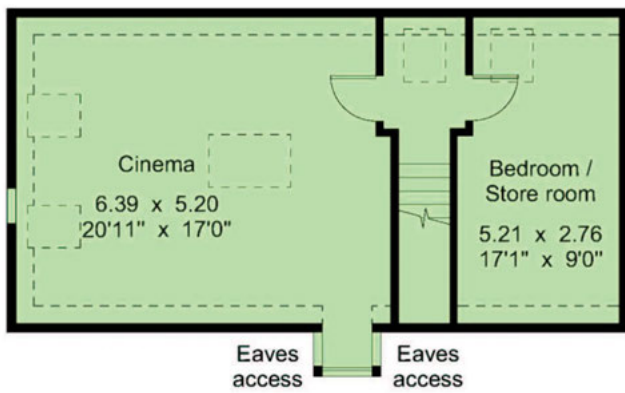
This impressive and attractive 6-bedroom family home, set in mature and leafy grounds is finished to the highest specification. Arranged over 3 floors it provides versatile accommodation for both family living and entertainment. It also benefits from a bespoke fitted kitchen, luxury bathrooms, private garden, double integral garage and ample parking.

Ideal for commuters, White Hame is close to all of the amenities of desirable Sevenoaks and also benefits from excellent access to the mainline station giving you links to Charing Cross in approximately 32 minutes. The M25 can be easily accessed via the A21 in 5 minutes by road, providing links to the entire South East road network and Gatwick and Heathrow airports.

LUXURY LIVING AT ITS FINEST

This stylish and modern home is one to be admired for its great attention to detail, which comes naturally to Sennocke Construction Ltd so whether you relax in the family room, entertain in the dining room, or work hard in the study, every moment in this beautiful home can be enjoyed.

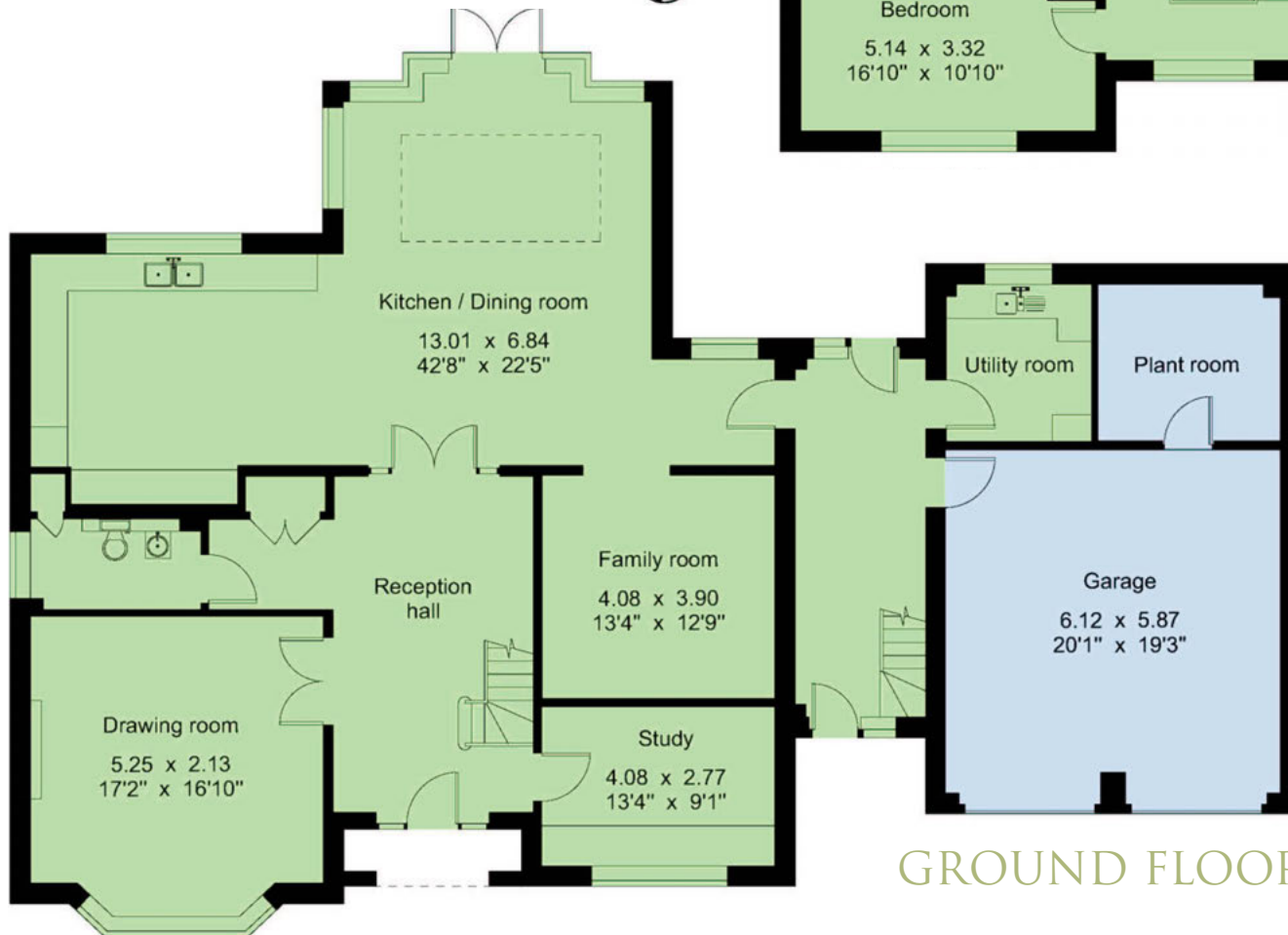




SECOND FLOOR



FIRST FLOOR



GROUND FLOOR

Gross internal area (approx.)

- House - 412.1 sq m (4435 sq ft)
- Garage - 46.0 sq m (495 sq ft)

For identification only - Not to scale

THE FINER DETAILS



KITCHEN & UTILITY

- Bespoke Rencraft fitted kitchen, utility, study, master en suite wardrobe units.
- Silestone worktops and up-stands.
- Integrated appliances by Neff to include oven, hob, microwave, double fridge/freezer, dishwasher, waste disposal.
- Lighting under wall units .

BATHROOMS & EN SUITES

- Quality white fitments with chrome showers, taps and screens.
- Hot and cold water delivered via Crosswater Digital system taps and showers.

- Thermostatic shower controls in chrome.
- Electrically heated towel rails to all bathrooms.
- Shaver point and extractor fan.
- Under floor heating.

ELECTRICAL AND LIGHTING

- Extensive use of LED down lighters in addition to traditional pendant lights.
- Infrastructure wiring to include the distribution of TV, satellite and Cat 5 cabling for data and telecoms, all terminating to a central hub where a neat and simple patching arrangement is provided. Satellite dish and aerial. CCTV, ceiling speakers and cinema pre-wired.

- Table lamp (5 amp) lighting points to drawing room and master bedroom.
- External lights with dusk till dawn' front and rear.

SECURITY SYSTEMS

- External door sets comprising multipoint espagnolette locking system.
- Intruder alarm system comprising movement detectors, panic buttons and keypads.
- Mains operated smoke detectors to hallway and each landing along with a heat detector in the kitchen.
- Electrically operated gates to In and Out' carriage driveway with intercom.



HEATING AND INSULATION

- Wood burning Stove in the Drawing Room.
- Gas fired central heating with energy efficient condensing boiler.
- Radiators to bedrooms with thermostatic valves.
- Water fed under floor heating throughout the ground floor providing a fully programmable and energy efficient system with individual room thermostatic controls.
- Mains pressure hot water system via Megaflow style cylinder.
- Independent immersion heater.
- High levels of floor, wall and ceiling insulation.

DECORATIVE FINISHES

- Emulsion to walls, white to ceilings and white satin to woodwork.
- Stipplelite obscure glazing to bathrooms and cloakroom.
- Black timber fascia and white soffit boards.
- Black deep flow gutter and downpipes.
- Bespoke decorative cornice to principle areas.
- Feature switch and socket faceplates to ground floor, landing and master suite.

JOINERY

- Bespoke seven foot high doors to compliment the nine foot ceilings to the ground floor.
- Bespoke aluminium finished leaded light windows, black external with white internal.
- Stone window sills, heads, and surrounds.
- Feature staircase.
- Solid internal doors with brushed chrome and glass furniture.

CERAMIC TILING AND FLOOR FINISHES

- Mixture of porcelain, ceramic, and mosaic tiling to bathrooms.
- Engineered timber flooring to hallway, drawing room, study, and family room.
- Porcelain tiling to cloakroom, kitchen, lobby area and utility rooms.
- Carpet to all other areas.

EXTERNAL FEATURES

- Indian sandstone to paths and patios.
- Permeable Gravelfix stone finish driveway.
- External tap to front and rear.
- External power socket to the rear.
- Turf to front and rear, hedges and shrubs.

GARAGE

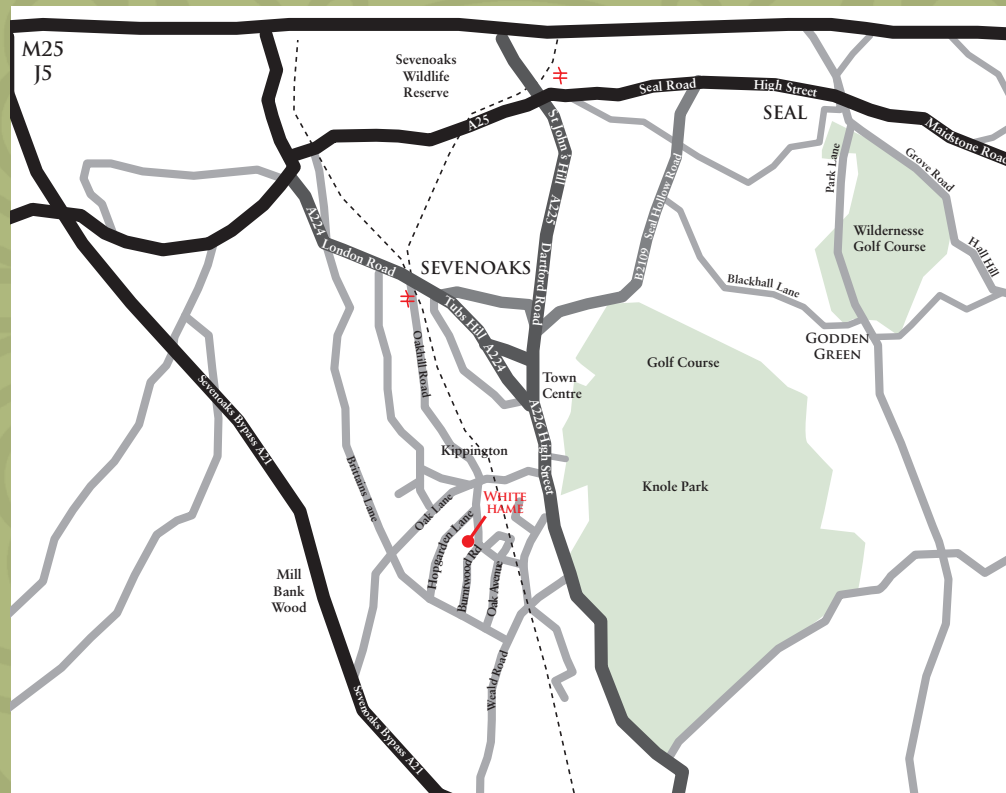
- High quality doors with electric operators.
- Power and light.
- Alarm system keypad.
- Plant room with ample storage.





WHITE HAME

2 BURNTWOOD ROAD, SEVENOAKS, KENT TN13 1PT



 **SENNOCKE** CONSTRUCTION LTD
01732 458199
info@sennockeconstruction.co.uk
sennockeconstruction.co.uk

 **savills**
01732 789700
rsmith@savills.com
savills.co.uk

Important Notice: Savills, their clients and any joint agents give notice that: 1. They are not authorised to make or give any representations or warranties in relation to the property either here or elsewhere, either on their own behalf or on behalf of their client or otherwise. They assume no responsibility for any statement that may be made in these particulars. These particulars do not form part of any offer or contract and must not be relied upon as statements or representations of fact. 2. Any areas, measurements or distances are approximate. All measurements are taken at longest and widest points. The text, photographs and plans are for guidance only and are not necessarily comprehensive. It should not be assumed that the property has all necessary planning, building regulation or other consents and Savills have not tested any services, equipment or facilities. Purchasers must satisfy themselves by inspection or otherwise. 3. These particulars were prepared from preliminary plans and specifications before the completion of the properties and are intended only as a guide. They may have been changed during construction and final finishes could vary. Prospective purchasers should not rely on this information but must get their solicitor to check the plans and specification attached to their contract.